

The Windsor-Essex County Health Unit (WECHU), in partnership with the Windsor Essex Local Immigration Partnership (WE LIP) organized an educational opportunity to learn about COVID-19 safety guidelines specific for schools. The session was held virtually on April 27th with over 85 settlement partners. During registration, participants had the opportunity to submit questions to incorporate into the presentation or address during the Q&A.

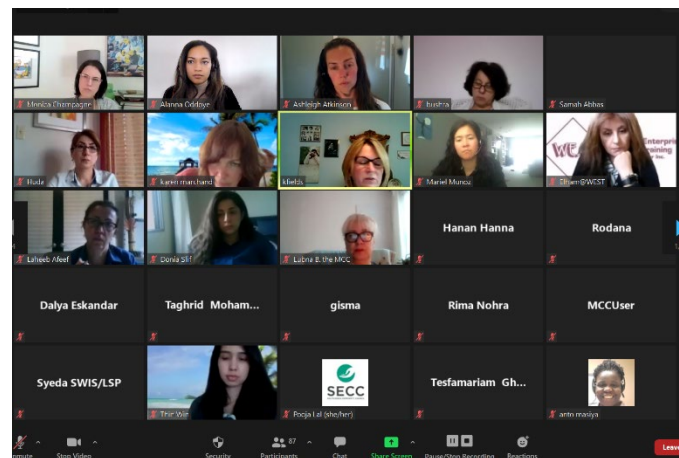
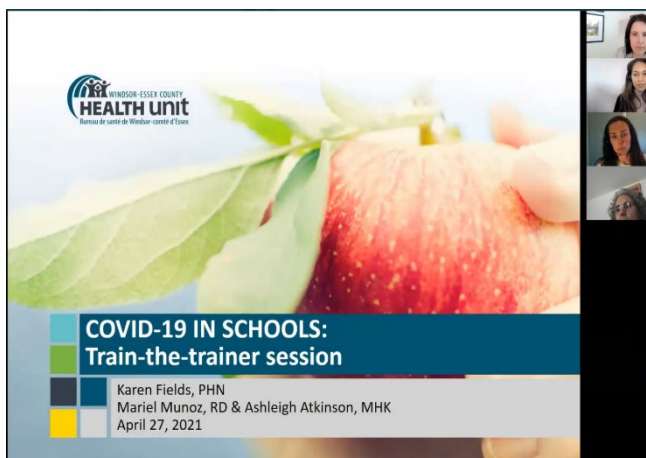


WECHU TRAIN-THE-TRAINER COVID-19 SCHOOL SAFETY GUIDELINES

APRIL 27TH, 2021

The presentation was delivered by Karen Fields, PHN, Mariel Munoz, RD and Ashleigh Atkinson, MHK from the Windsor Essex County Health Unit, and provided information about what WECHU and local school boards are doing to reduce the spread of the virus in schools. WECHU covered the following:

- A brief review of COVID-19 and infection prevention controls in schools
- An in-depth look at current guidelines/requirements for attending school in-person during COVID-19. This includes information on personal protective equipment, symptom screening, and what a family must do if a member of the household has symptoms related to COVID-19
- A step-by-step review of the actions taken by the public health unit when investigating a potential case of COVID-19 in a school. This includes a review of the communication resources shared with families, and expectations for students who are dismissed as part of a cohort dismissal.
- A list of available resources/programs to support students who are dismissed as part of a cohort dismissal



During the Q&A, Jennifer Johnston, RN, Manager of Healthy Schools addressed a number of questions regarding the COVID-19 Vaccine.

Participants were encouraged to provide feedback through a survey that was sent following the session. As well, WE LIP shared additional resources including a link to the [Vaccine Hesitancy Webinar](#) that the WECHU held in March 2021, links to [FAQs on the WECHU website](#) and newly released [COVID-19 Vaccine Guidance Documents](#). The feedback provided will help to plan future educational opportunities.

The recording of the session will be made available on the [WE LIP COVID-19 Resources](#) webpage and ongoing information and support will continue to be provided through the [WECHU website](#).

