

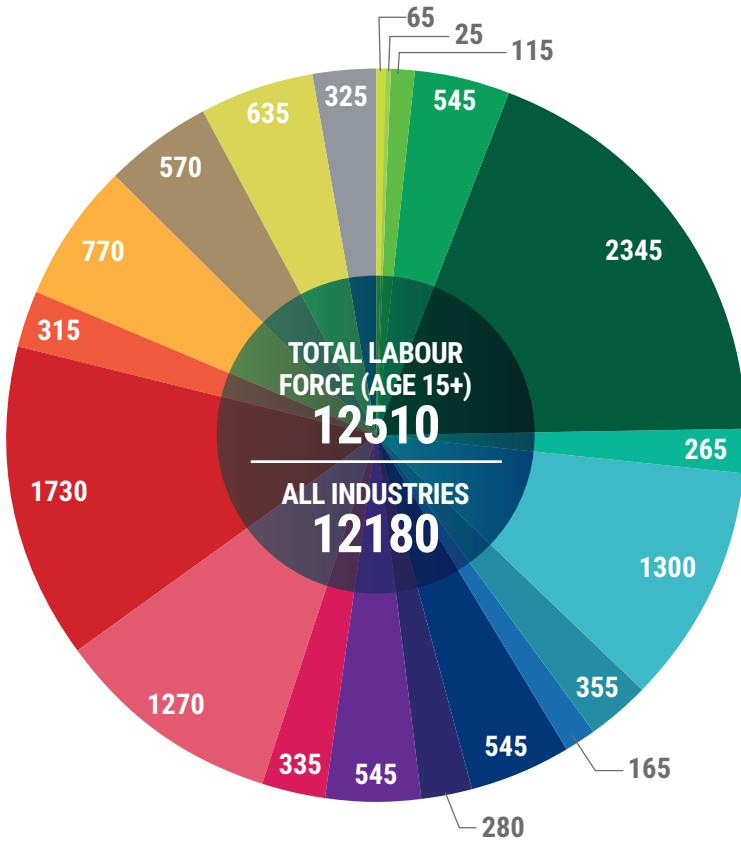
TECUMSEH

EMPLOYMENT ONTARIO

TYPE OF INDUSTRY

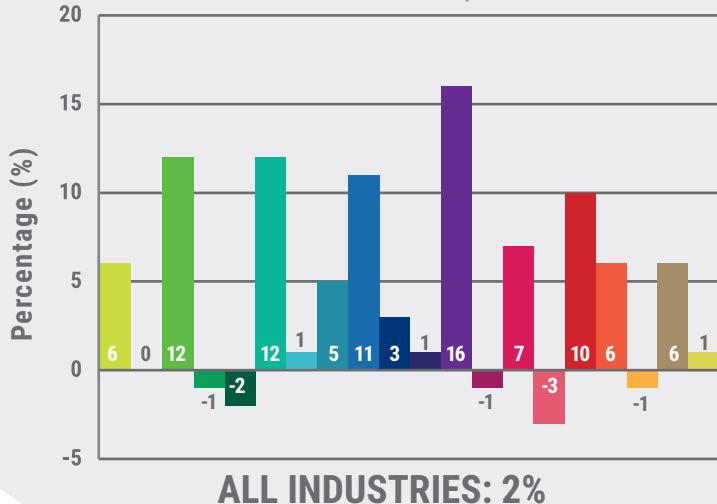
TOTAL EMPLOYMENT BY INDUSTRY

Data Source: Statistics Canada, National Household Survey, 2011



GROWTH FROM 2014 TO 2020 BY NUMBER OF FORECASTED JOBS

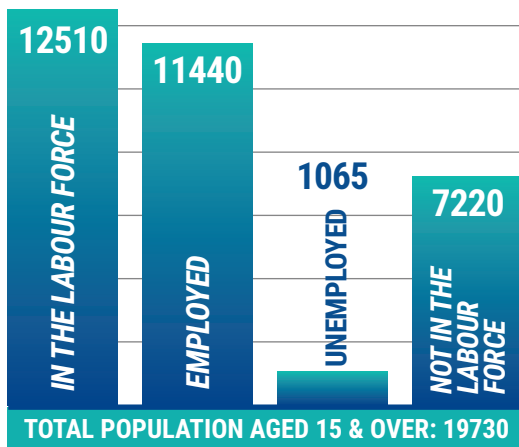
Data Source: EMSI Analyst



- Real Estate and Rental & Leasing
- Real Estate and Rental & Leasing
- Management of Companies & Enterprises
- Administrative & Support, Waste Management, & Remediation Services
- Educational Services
- Health Care and Social Assistance
- Arts, Entertainment, and Recreation
- Accommodation & Food Services
- Other Services (Except Public Administration)
- Public Administration
- Other
- Finance and Insurance
- Information & Cultural Industries
- Transportation & Warehousing
- Retail Trade
- Wholesale Trade
- Manufacturing
- Construction
- Utilities
- Mining, Quarrying, and Oil & Gas Extraction
- Agriculture, Forestry, Fishing, and Hunting

LABOUR FORCE STATUS

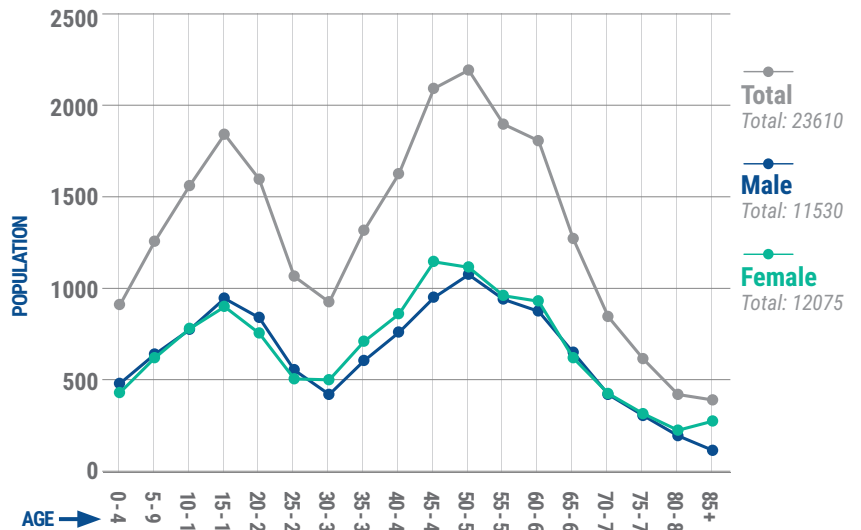
Data Source: Statistics Canada, National Household Survey, 2011



58.0 % Employment Rate
8.5 % Unemployment Rate
63.4% Participation Rate

AGE CHARACTERISTICS

Data Source: Statistics Canada, National Household Survey, 2011



OF BUSINESSES BY EMPLOYEE SIZE RANGE

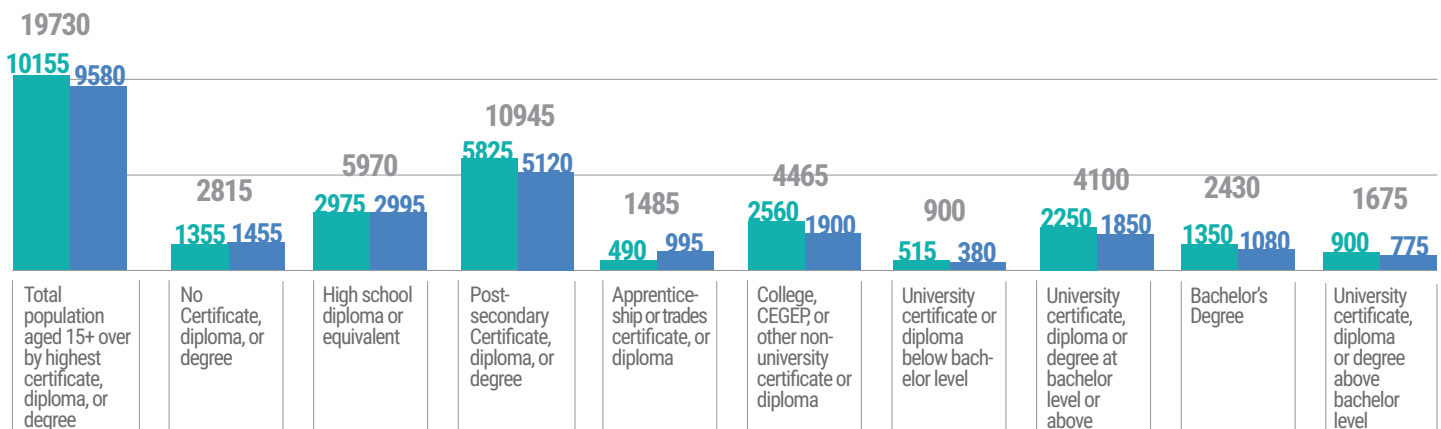
Data Source: EMSI Analyst, January 2015

NUMBER OF EMPLOYEES	TOTAL EMPLOYEES	1-4	5-9	10-19	20-49	50-99	100-199	200-499	500+	SUB-TOTAL (1-500+)	INDETERMINATE
JUN-09	1778	363	158	132	108	25	14	5	0	805	973
JUN-14	1968	410	178	125	108	28	13	6	0	868	1100
INCREASE / DECREASE IN # OF BUSINESSES BETWEEN 09-14	10.7%	12.9%	12.7%	-5.3%	0%	12.0%	-7.1%	20.0%	0.0%	7.8%	13.1%

EDUCATIONAL ATTAINMENT

Data Source: Statistics Canada, National Household Survey, 2011

Female Male Total



NUMBER OF IMMIGRANTS:

Data Source: Statistics Canada, National Household Survey, 2011

3955