

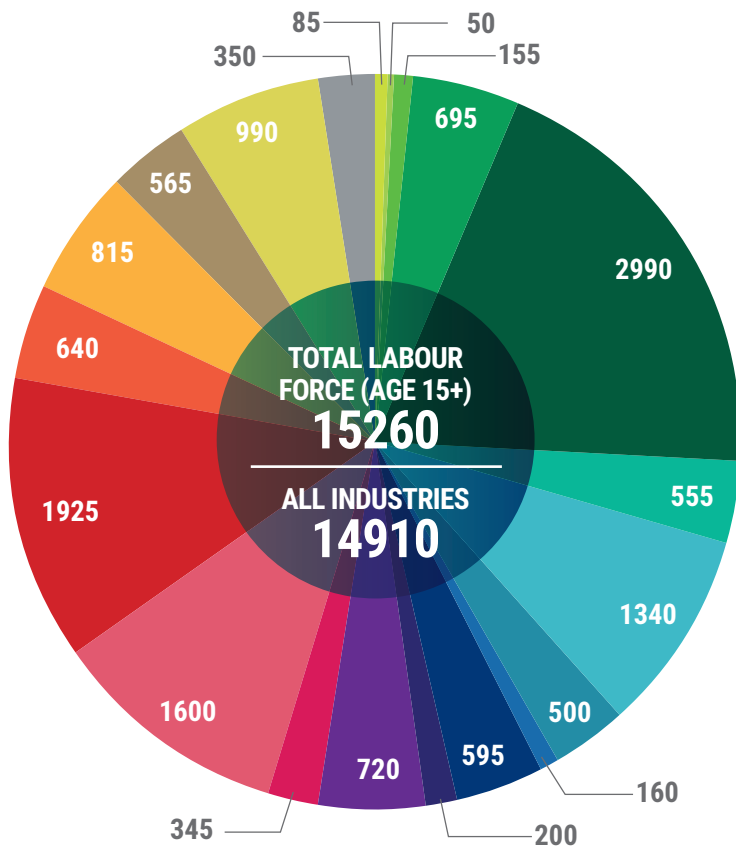
LASALLE

EMPLOYMENT ONTARIO

TYPE OF INDUSTRY

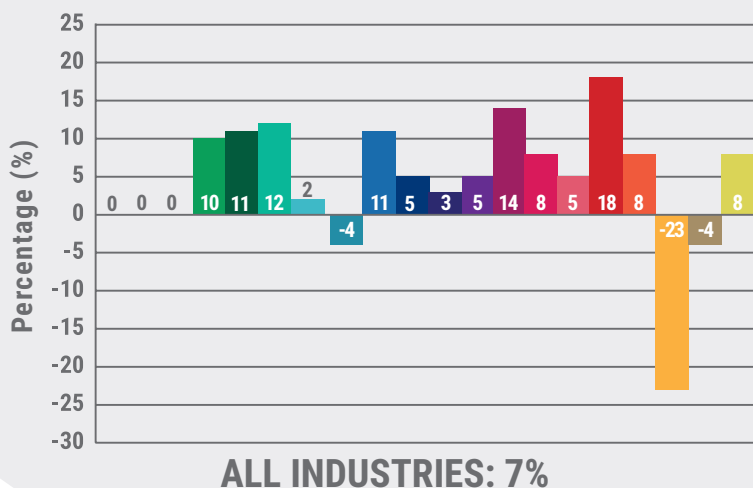
TOTAL EMPLOYMENT BY INDUSTRY

Data Source: Statistics Canada, National Household Survey, 2011



GROWTH FROM 2014 TO 2020 BY NUMBER OF FORECASTED JOBS

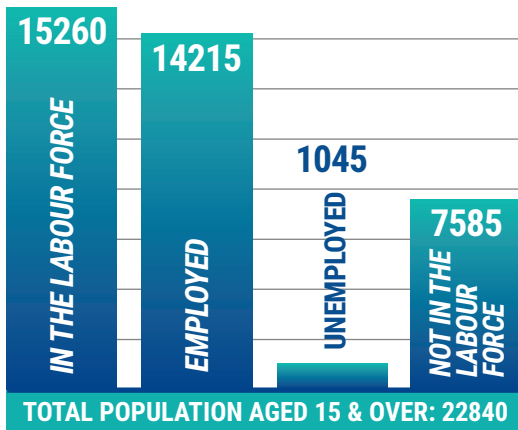
Data Source: EMSI Analyst



- Agriculture, Forestry, Fishing, and Hunting
- Mining, Quarrying, and Oil & Gas Extraction
- Utilities
- Construction
- Manufacturing
- Wholesale Trade
- Retail Trade
- Transportation & Warehousing
- Information & Cultural Industries
- Finance and Insurance
- Real Estate and Rental & Leasing
- Real Estate and Rental & Leasing
- Management of Companies & Enterprises
- Administrative & Support, Waste Management, & Remediation Services
- Educational Services
- Health Care and Social Assistance
- Arts, Entertainment, and Recreation
- Accommodation & Food Services
- Other Services (Except Public Administration)
- Public Administration
- Other

LABOUR FORCE STATUS

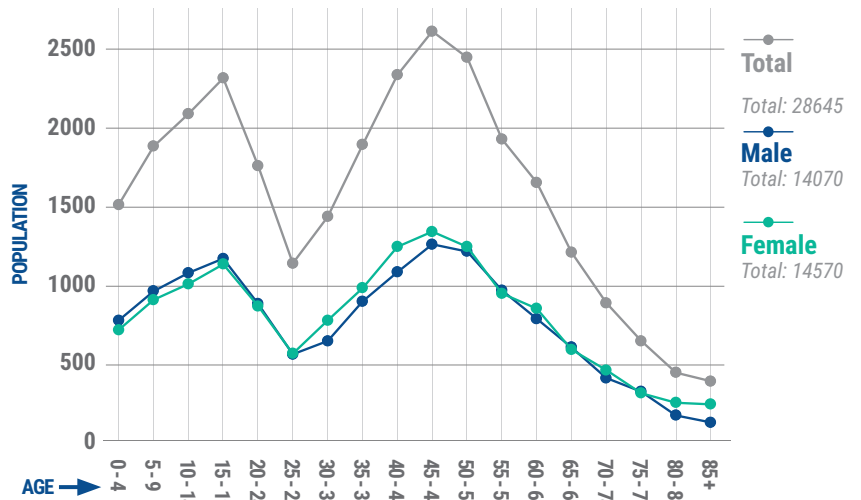
Data Source: Statistics Canada, National Household Survey, 2011



62.2 % Employment Rate
6.8 % Unemployment Rate
66.8% Participation Rate

AGE CHARACTERISTICS

Data Source: Statistics Canada, National Household Survey, 2011



OF BUSINESSES BY EMPLOYEE SIZE RANGE

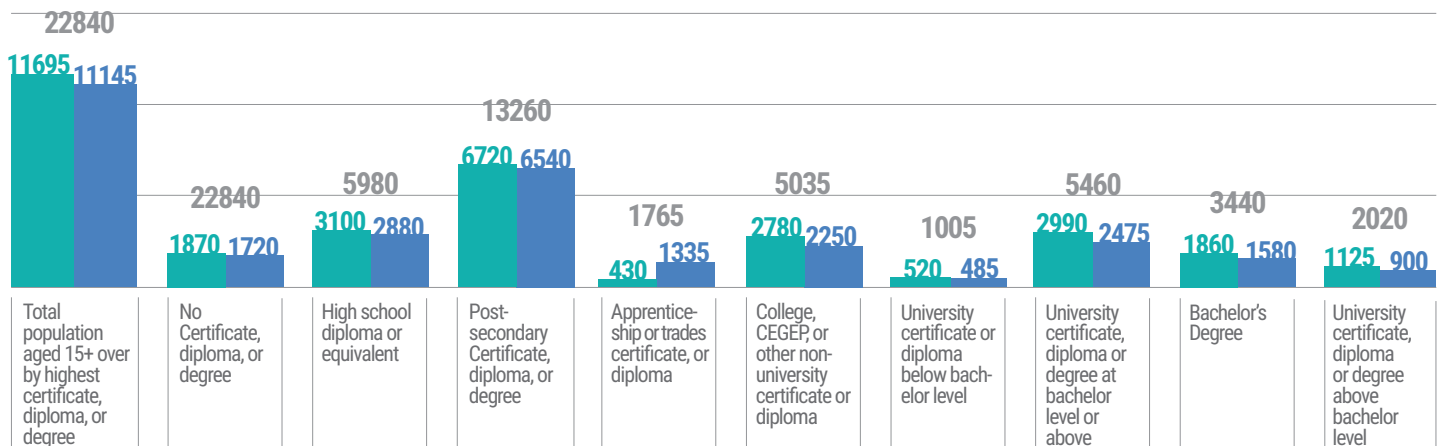
Data Source: EMSI Analyst, January 2015

NUMBER OF EMPLOYEES	TOTAL EMPLOYEES	1-4	5-9	10-19	20-49	50-99	100-199	200-499	500+	SUB-TOTAL (1-500+)	INDETERMINATE
JUN-09	1085	241	113	63	34	7	5	1	0	464	621
JUN-14	1099	251	85	50	31	9	3	1	0	430	669
INCREASE / DECREASE IN # OF BUSINESSES BETWEEN 09-14	1.3%	4.1%	-24.8%	-20.6%	-8.8%	28.6%	40.0%	0.0%	0.0%	-7.3%	7.7%

EDUCATIONAL ATTAINMENT

Data Source: Statistics Canada, National Household Survey, 2011

Female Male Total



NUMBER OF IMMIGRANTS:

Data Source: Statistics Canada, National Household Survey, 2011

4565