

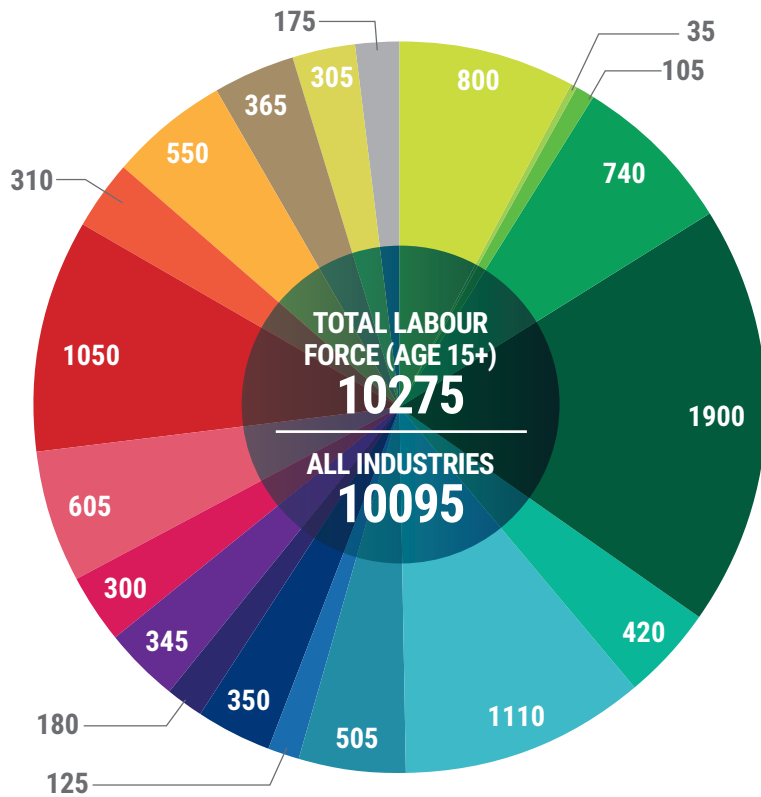
KINGSVILLE

EMPLOYMENT ONTARIO

TYPE OF INDUSTRY

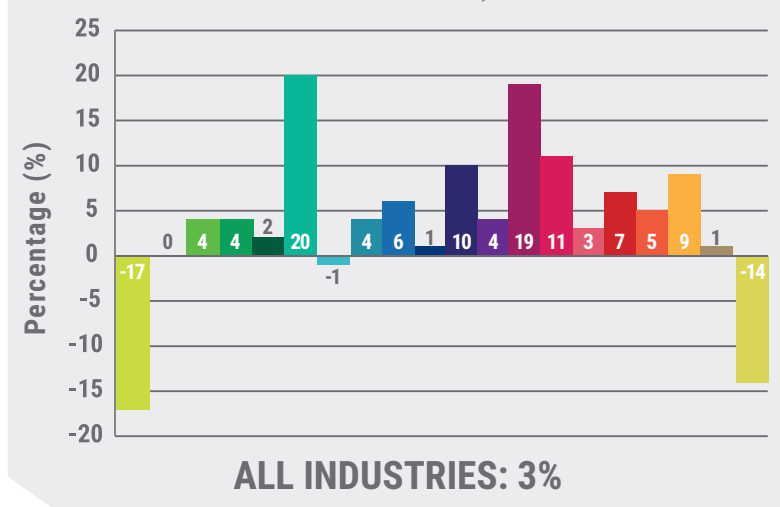
TOTAL EMPLOYMENT BY INDUSTRY

Data Source: Statistics Canada, National Household Survey, 2011



GROWTH FROM 2014 TO 2020 BY NUMBER OF FORECASTED JOBS

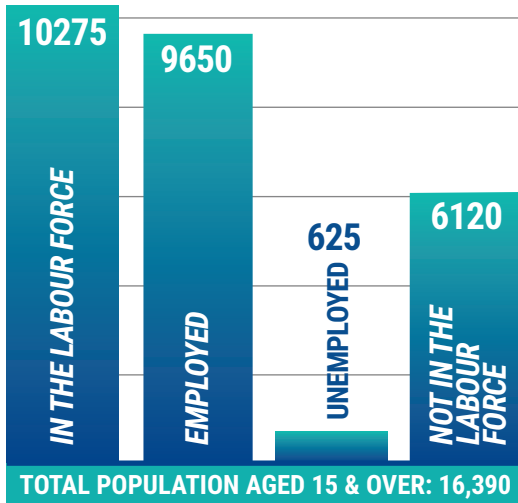
Data Source: EMSI Analyst



- Real Estate and Rental & Leasing
- Real Estate and Rental & Leasing
- Management of Companies & Enterprises
- Administrative & Support, Waste Management, & Remediation Services
- Educational Services
- Health Care and Social Assistance
- Arts, Entertainment, and Recreation
- Accommodation & Food Services
- Other Services (Except Public Administration)
- Public Administration
- Other
- Agriculture, Forestry, Fishing, and Hunting
- Mining, Quarrying, and Oil & Gas Extraction
- Utilities
- Construction
- Manufacturing
- Wholesale Trade
- Retail Trade
- Transportation & Warehousing
- Information & Cultural Industries
- Finance and Insurance

LABOUR FORCE STATUS

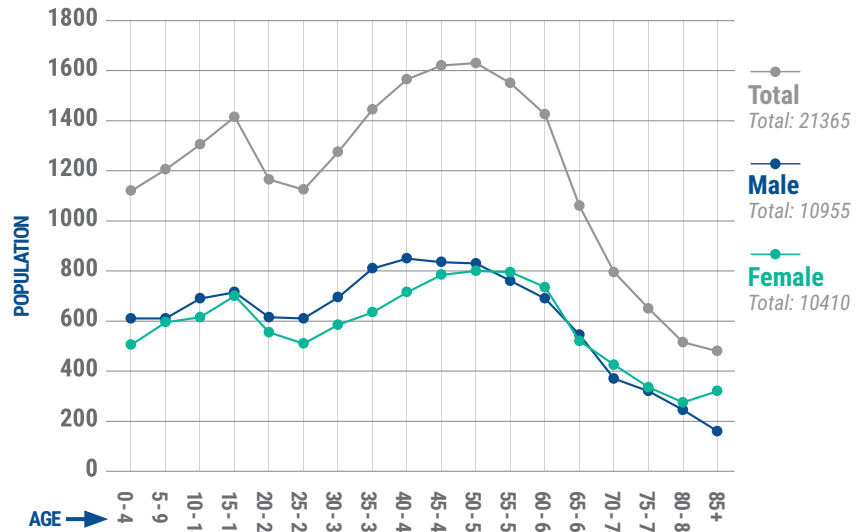
Data Source: Statistics Canada, National Household Survey, 2011



58.9 % Employment Rate
6.1 % Unemployment Rate
62.7% Participation Rate

AGE CHARACTERISTICS

Data Source: Statistics Canada, National Household Survey, 2011



OF BUSINESSES BY EMPLOYEE SIZE RANGE

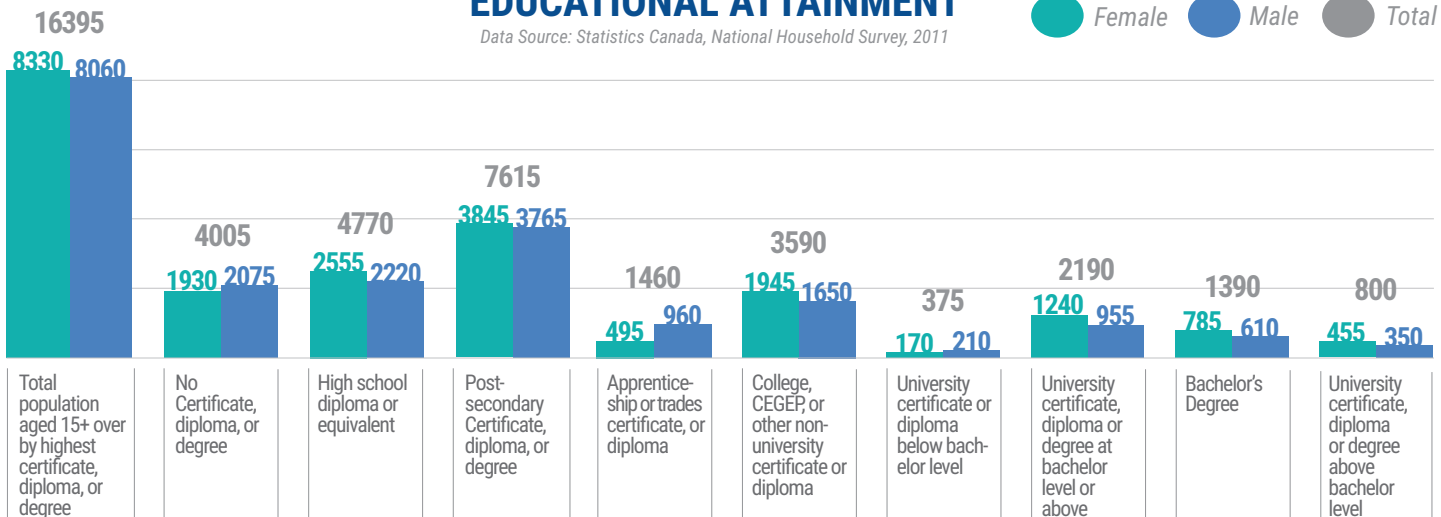
Data Source: EMSI Analyst, January 2015

NUMBER OF EMPLOYEES	TOTAL EMPLOYEES	1-4	5-9	10-19	20-49	50-99	100-199	200-499	500+	SUB-TOTAL (1-500+)	INDETERMINATE
JUN-09	1190	267	116	76	59	20	7	0	0	545	645
JUN-14	1321	276	114	87	69	19	6	5	1	577	744
INCREASE / DECREASE IN # OF BUSINESSES BETWEEN 09-14	11.0%	3.4%	-1.7%	14.5%	16.9%	-5.0%	-14.3%	500.0%	100.0%	5.9%	15.3%

EDUCATIONAL ATTAINMENT

Data Source: Statistics Canada, National Household Survey, 2011

Female Male Total



NUMBER OF IMMIGRANTS:

Data Source: Statistics Canada, National Household Survey, 2011

2845